



# AN EXCITING OPPORTUNITY FOR ALL FRIENDS OF GREEN SPACES

TO CREATE **TiCL APP #TreeTrails** FREE OF CHARGE



## Reasons to CREATE A #TREETRAIL

TiCL App is a means for you to very easily create a guide or trail in an area that other people can navigate without you having to put anything on the ground or make a map.

It is fun to follow a trail or explore an area with TiCL App – it's a great way to learn about the things around you.

TiCL App allows local area managers such as Friends Groups to 'geo locate' physical features of the environment and link them into trails, for example, trees, flower beds, sculptures, play parks, cafes or other features.

TiCL App encourages you to photograph points of interest and add short descriptions about them.

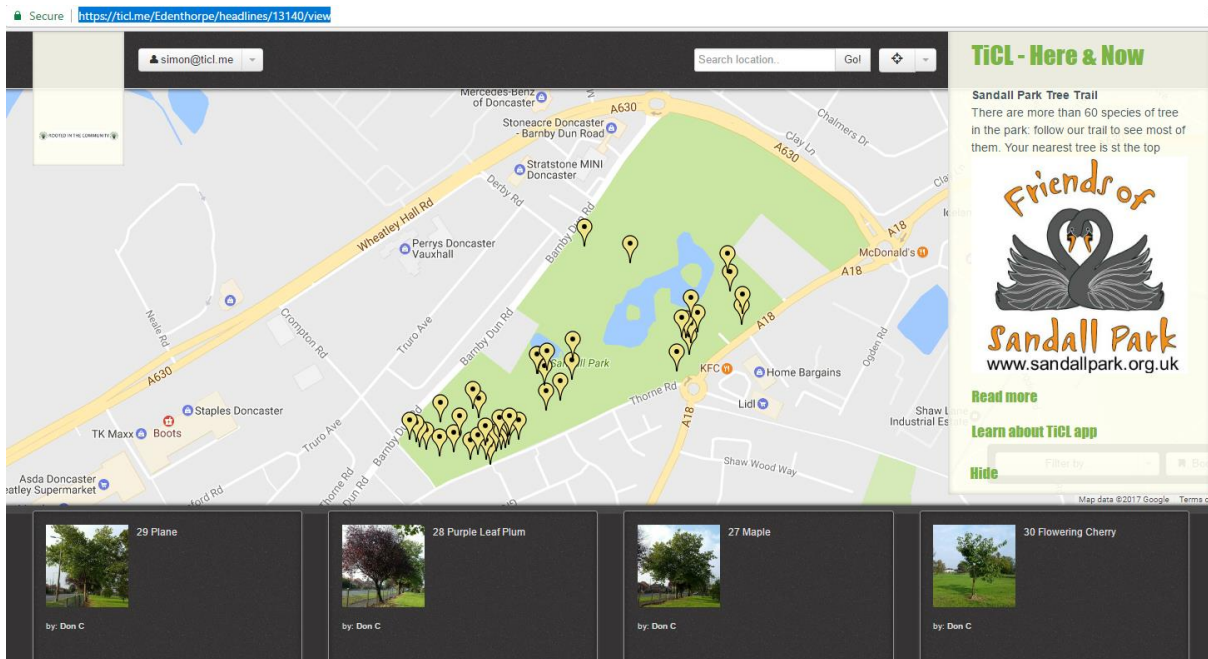
You can add links to the 'best' web information about each item.

TiCL App links to your website or any social media so that, as visitors explore the park or town physically, they find your organisation virtually.

A TiCL App #TreeTrail automatically generates a personalised weblink map of your park such as the one for the Friends of Sandall Park #TreeTrail, shown below.

<https://ticl.me/Edenthorpe/headlines/13140/view>

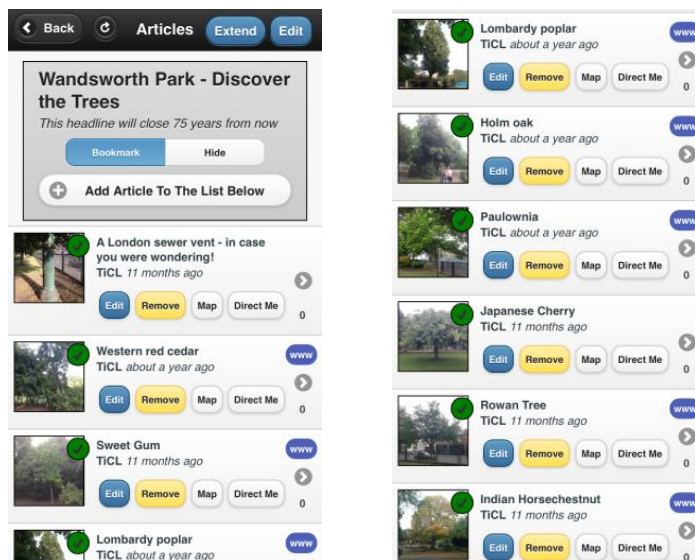
## Friends of Sandall Park #TreeTrail



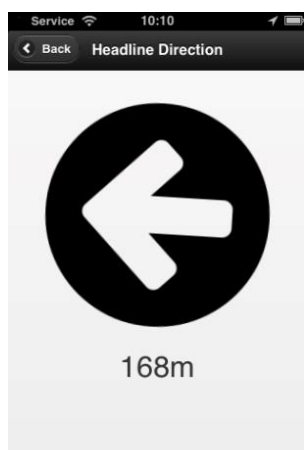
A TiCL App #TreeTrail like this one can be created FREE OF CHARGE by Friends Groups, Tree Wardens, Tree Officers, nature groups or any other association with an interest in educating, sharing knowledge and #ChangingViews

### NAVIGATING A TRAIL

TiCL App returns information to all users as lists, with their nearest item on the list at the top. TiCL makes it simple for users to see what's available nearby and find it. It also makes navigating a trail uncomplicated – just keep heading to the nearest, without repeating any.



The 'Direct Me' feature of the App shows an arrow and a distance to each item.



The Map feature of the App shows each item accurately on a Google Map



TiCL App can also be used like this to create trails, geo-caching and treasure hunt opportunities – it's fun and educational!

TiCL App #TreeTrails are additionally displayed on the [www.ticl.me](http://www.ticl.me) website, so you or your users don't have to have a smartphone - or even be registered with TiCL - to access them.

## Creating a #TreeTrail, step by step

Creating a TiCL App Trail/Guide is quick and easy if you follow these simple steps:

- 1 Register your Friends or other organisation with TiCL

You can do this either on the TiCLApp <https://ticl.me/ticlapp> (Apple or Android) or on the website <https://ticl.me>

- **Tips**

Don't forget your password

If you don't receive your 'Activation Code' within a few moments, please check your spam folder

Allow push notifications and enable location services if asked

- 2 Go to the centre (roughly) or entrance of your Green Space with your smartphone and TiCL App

- **Tip**

Have your Friends or other organisation logo stored as a photo on your phone

- 3 Open TiCL App

- 4 Press **+** [in the top right hand corner]

- 5 In **Title**, write the name the #TreeTrail will be identified by using this format: [Your Green Space Name] Tree Trail
- 6 In **More...** do write a description of what the trail is going to be about, for example 'Tree Trail of interesting trees. Your nearest tree is at the top of the list'
- 7 Add your Friends or other **Logo** from the photo in your library file library
- 8 Press **submit** (while you are in the Green Space)

YOU HAVE STARTED THE GUIDE!

NOW, MAKE IT FREE AND LAST INDEFINITELY

- 1 Go back into the Headline you have just submitted
- 2 Press **Edit** in the top right hand corner
- 3 Press **Premium Editing**
- 4 In the Promotion Code Box, enter **TreeLove**

YOU ARE NOW READY TO ADD POINTS OF INTEREST TO THE TRAIL / GUIDE

Adding points of interest to the guide or trail you have created is easy

You will need the TiCL App to do this.

- **Tip**

Decide who you are going to allow to update the points of interest.

*Points of interest 'Articles' on TiCL can only be edited by the TiCL user that added them (though they can be removed completely by the user that created the headline – YOU!)*

You might decide that you are going to create the whole trail but if you let Friends 'adopt' points of interest and leave it up to them to update the content from time to time with a picture of a tree to reflect leaf colour change, leaf fall, fruiting, flowers and so on, it might be more interesting both for the user and as a record for the group.

- 1 Go to the point of interest that you want to add and open the TiCL App
- 2 Find and open the Headline about the trail

- 3 Press refresh – that’s the **curly arrow** in the top left – a couple of times. This helps the App to calculate your position accurately.
- 4 Press **Add Article To The List Below**
- 5 In Text, **add a description** of the point of interest
- 6 **Take Photo** of the Point of interest
- 7 Press **Submit** at the location of the point of interest
  - **Tip**  
If you have had to move away from the point of interest to take the photo, move back to it before you press submit
- 8 **Check** where you have geo-located the point of interest by looking at it **using Map**

REPEAT THIS PROCESS UNTIL YOU HAVE FINISHED THE TRAIL / GUIDE

**THAT’S IT!**

For more help on creating a trail, check <https://ticl.me/trails>  
or contact the TiCL Response Team on [contact@ticl.me](mailto:contact@ticl.me)